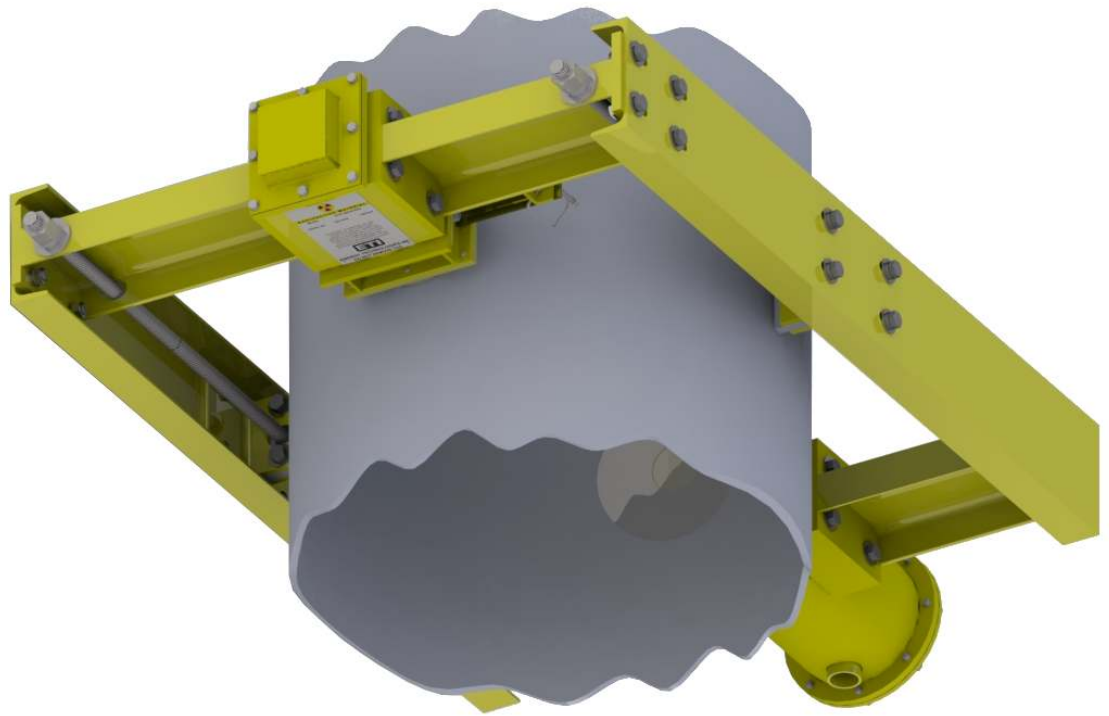




Model 510 BTU Meter



The Model 510 BTU Meter is a registered nuclear gauging device for measuring as-received ash, moisture, heating value, and weight. The measuring portion of the device, which consists of a source and detector assembly, is normally mounted on a feeder pipe. The detector is connected to an electronics enclosure housing an industrial computer which processes the detector signals and displays the measured results to the operator. The BTU meter generates ash and moisture weight percent, heating value, and weight/density measurements every three seconds making it useful in online process and control applications.

- **Process Control**
Use of the BTU Meter on the output of a prep plant allows for closed-loop feedback to control heavy media density in the coal circuit. Use of the BTU Meter on a plant bunker feed belt allows for boiler operation adjustments to reduce boiler fouling and slugging and can lead to improvements in long-term heat rate.

Energy Technologies Inc.
1741 Triangle Park Drive
Maryville, TN 37801
USA

Phone: (865) 927-9330
Fax: (865) 927-8017

Email: info@energytechinc.com

For more information on any of our products or services please visit us on the web at www.energytechinc.com.

SERVICES

ETI offers an flexible service contracts for all analyzer customers. Coverage includes radiation safety surveys, leak testing, calibration of all electronics and nucleonics, cleaning, and routine software/hardware maintenance

Technical Support

Installation and Setup

Maintenance

Application Support

Hardware Support

Guaranteed Warranty

Energy Technologies Inc.
1741 Triangle Park Drive
Maryville, TN 37801
USA

Phone: (865) 927-9330
Fax: (865) 927-8017

Email: info@energytechinc.com

For more information on any of our products or services please visit us on the web at www.energytechinc.com.

Design Features

Rugged Belt Mounted Analyzer

- Assembly is dustproof and waterproof
- Assembly bolts onto existing belt structure without modification
- Minimizes installation time and cost

Source Holder/Detector

- Gamma sources are housed in a single shield
- Gamma rays are collimated into a fan beam to maximize coal interrogation zone (approximately 160 times that of other units)

Auto-Standardization

- Automatic software compensation for electronic drift, source decay, and temperature variations performed every three seconds

- Ensures system precision and accuracy

Detector Temperature Control

- Eliminates drift due to ambient temperature variations

- Ensures system precision and accuracy

Advanced Data Acquisition and Control

- Intuitive and easy to use operator interface
- Graphical Displays
- Automatic Report Generation
- Automated Calibration
- Manual and Automatic control of process control devices (sort gate, feeder, etc.)
- Analog outputs for connection to other process equipment
- Digital outputs for alarm or sort control



Technical Specifications

Performance

Accuracy 0.3-1.0 wt. % (typ) for washed or raw coals
Response Time 3 seconds (typ)

Operational Material

Material Top Size 0-6 in (0-152 mm) (typ), may accommodate 12 in (254 mm)
Material Depth 1-14 in (25-356 mm) depending on material density

System Inputs

Belt Running A pair of voltage free contacts indicating that the belt is running

System Outputs

Analog Eight (8) isolated 0-20mA or 4-20 mA analog outputs for reporting material ash wt%/weight
Digital Twelve (12) 24 V digital outputs

Environmental Conditions

Operating Temperature Analyzer: -5°-120°F (-20-40°C)
Enclosure: 40°-120°F (5-40°C)
Humidity Analyzer: 0-100%
Enclosure: 0-90%, non-condensing
Environment Class II, Div.1 group F (G optionally available). All units are protected against dust and moisture (NEMA 4).

Electrical Requirements

Power Requirement 120 - 240 VAC, 50 - 60 Hz, 1 KVA

Radiation Levels

Surface 1.0 mREM/hr maximum radiation dose rate at all points on the surface
2.0 of the equipment except in the direct beam.
Vicinity Less than 0.1 mREM/hr maximum radiation rate at all points outside 3 ft. of the source housing.

Shipping Weight

Weight 750 lbs (340 kg)

Options

Remote Readout / High-speed Gate / Belt Speed Switch